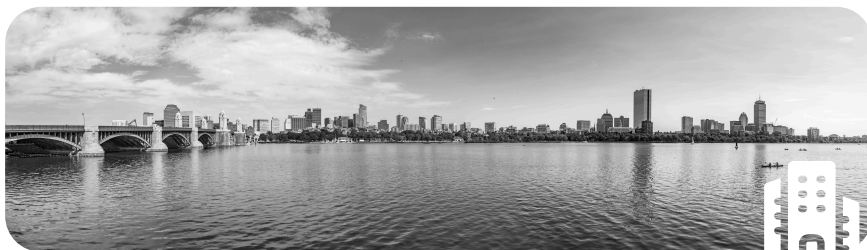
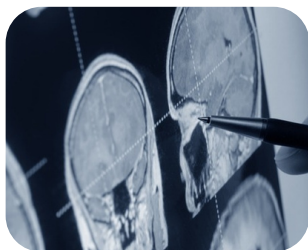


A **Workers Comp Care**
Event



Work Related Injuries Workshop

2026



*Proudly endorsed by the
Lewis Millender Foundation*



March 23rd & 24th, 2026



The Conference Center at Waltham Woods
Waltham, Massachusetts



www.workerscompcare.com



Michela Capobianco, Program Director
Michela@BostonMIS.com

Conference Highlights



- **Jam packed program** over 2 days with over 78 talks covering 29 topic areas!
- **92 renowned faculty**, all leading experts in their respective fields
- **Interactive meeting format** featuring panel and case-based discussions, as well as our popular Interactive Workshops
- **Opportunity for 1-on-1 networking, discussions and interactions** with a who's who in the field of workplace injury
- **Exhibits by premier industry leaders** in the field
- **360 degree review** of current challenges & emerging solutions in the fields of-
 - Orthopedic surgery & other clinical reviews
 - Alternative treatment options
 - Case management
 - Legal decision making
 - Claims related topics
 - Human resources policies
 - Injury & disability prevention
 - Physical therapy
 - Vocational rehabilitation
 - Return-to-work protocols
 - ...and much more!



Learning Objective

At the conclusion of this learning activity, members of the healthcare team will be able to apply evidence-based care strategies, along with best practices and current trends, to effectively manage work-related injuries and achieve positive, meaningful outcomes in the care of injured workers.

Accreditation Statements

Details forthcoming.





Welcome Message



Dear colleagues,

We are pleased to invite you to the 2026 Work Related Injuries Workshop, a dynamic and forward-thinking educational experience dedicated to advancing the care of injured workers. Hosted by Workers Comp Care, in collaboration with Dartmouth Health and the International Musculoskeletal Society (IMS), this annual workshop brings together leaders across disciplines to share practical insights, innovative strategies, and evidence-based approaches that improve outcomes and support timely, safe recovery from work-related disability.

Guided by our nationally recognized Advisory Board and expert faculty, the Work Related Injuries Workshop delivers a true 360-degree perspective on workplace injury prevention and management, addressing today's most pressing challenges while exploring emerging clinical, operational, and policy-driven solutions shaping the future of care.

The conference continues its signature "Fast-Focused-Fun" format, featuring 70+ high-yield presentations designed to maximize learning, engagement, and real-world applicability. Attendees represent a broad and diverse audience, including occupational health professionals, orthopedic and spine specialists, pain management and rehabilitation clinicians, physical and occupational therapists, physician assistants, nurses and nurse practitioners, insurance professionals, case managers, judges, attorneys, HR leaders, and other stakeholders across the workers' compensation ecosystem.



We look forward to welcoming you in 2026 for another energizing and impactful workshop, and to the conversations, collaborations, and ideas that will continue to move our field forward.

Sincerely,

Tony Tannoury, MD
President, Workers Comp Care

Karen Huyck, MD, PhD, MPH, FACOEM
Lead Planner, Workers Comp Care