


PAN and the COVID-19 NIGHTMARE

Work Related Injuries Workshop 2022



Kenneth A Larsen, DMin, PhD
American Board of Medical Psychology
New England Baptist Hospital

Making the Darkness Conscious

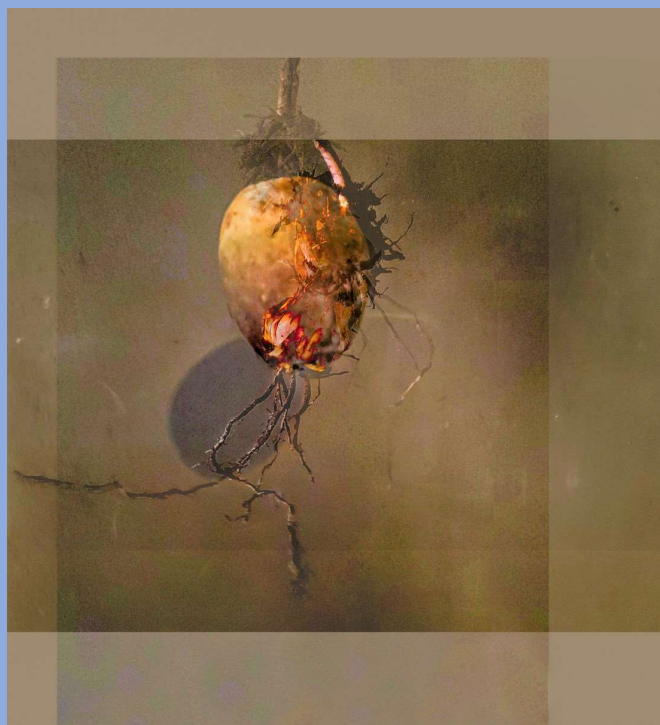


Photo Montage by Ken Larsen July 19, 2020

Spectators throw Turnips at PAN Devil in Spain



PAN – PANIC TERROR – COVID19

Pan is the god of Wild, of Nature itself. He is half human and half goat. His cloved feet give him away as the Devil himself. The word PANIC is derived from this god's name.





Bio-Chemical Effects of Stress and Trauma on the Brain

CORTISOL

Blocks the integrative memory function of the hippocampus

It can become Neurotoxic



ADRENALIN

Increases encoding of emotions & perceptions (Body / Implicit Memory)

Hippocampal blockade negatively effects managing rational thought and memory and disrupts one's ability to cope

Daniel Siegel, MD

PAN is also the god of Music Dance Laughter







Then the Languishing Set In

The Dynamic Balance of the Autonomic Nervous System

Dance – Flow – Oscillation - Rhythm

of pain, anxiety, control, release, trust, and peace in those who are suffering



Namaste

