

Case #2: MC


Xinning Li, M.D.

Assistant Professor

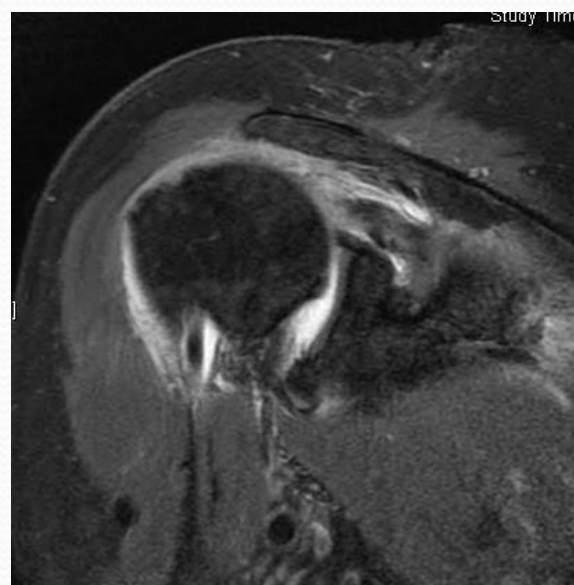
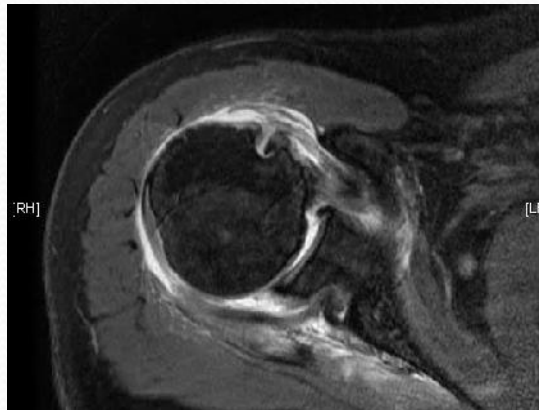
Sports Medicine and Shoulder Surgery

Boston University School of Medicine – Boston Medical Center

Team Physician – Boston University Athletics

- 
- 68 Year old Female, RHD, s/p fall on ice in Jan, 2015, presents with Right Shoulder pain x 3 months and loss of function. “Can’t lift it”.
 - Pain with activities and pain at night
 - 8/10
 - SSV ~15%
 - PMH: HTN/Cholesterol, PSH: Appy
 - SH: No Tob, +Alcohol
 - Works as Mass Pike Toll Collector
 - Lives by herself

Images



Exam



Options??

- Conservative Management?
- Surgical Options?
- Workers Comp Approval Process?
- Expected Recovery and Return to work?
- Audience?

Surgery



Post Op – 6 Weeks



3 Months



THANKS

